



THE WATER SCROOGE™



INTELLIGENT WATER VALVE

The Toilet Scrooge™

INTRODUCING OUR ALL NEW INTELLIGENT WATER VALVE

ROI & Helping the World WIN!

The all new Intelligent Valve prevents leaks in tank-filled toilets, saving you money, and helping stop the waste of water! In the U.S. alone, we waste over 1 TRILLION gallons of water per year. A few studies suggest that multifamily water usage averages between 80 gallons per day (gpd) per person to 150 gpd per day per person. Type of cooling, on-site laundry, irrigation needs, and swimming pools have all shown to have a significant effect on total water use.

Percentage of water use by end-use category (bathroom, kitchen, laundry, etc.) varies considerably from one multifamily type to the next. For example bathroom water use can range from as low as 30% for a pre-worked building to as high as 76% for a new construction building, with the toilet typically being the major contributor. On average, 1 in 5 toilets leak (20%), ranging from small, silent leaks, to wide open flapper leaks. The Toilet Scrooge™ eliminates the continuous leaking, saving water, and your facility money.

These savings grow the longer you have Valves installed in your facility. A leaking toilet can waste about 200 gallons every day, and due to sediment buildup, material degradation, leaks are bound to occur during the lifetime of a toilet. Don't wait to protect your facility.

Powered by H2O (seriously)

The technical term is energy harvesting. Simply put, we took an age old concept, the water wheel, miniaturized it, and integrated it into our new Valves. This generates energy, keeping the valve powered. No replacing batteries, no hard wiring required, simply tie it into your flow of water, and you're all set.

*All information is subject to change

INTELLIGENT WATER VALVE

The Toilet Scrooge™



Simple to Use

The motion sensor detects when a user is present, and allows water to flow to the toilet.
No person = No water flow (aka no waste)

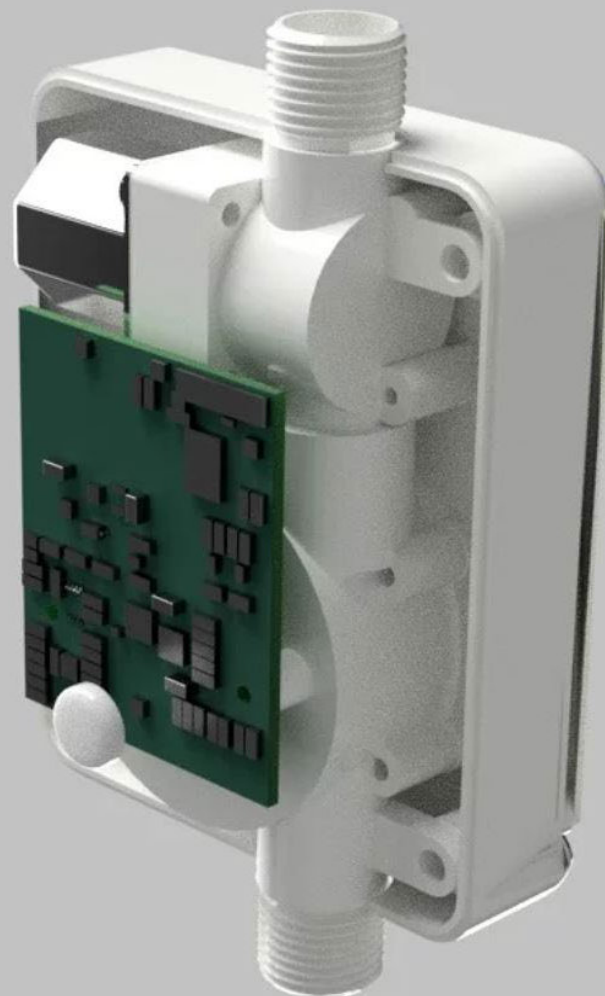
Easy to Install

Our product can be installed in minutes, providing an easy transition to saving water!

Take a Look Inside

Solenoid
Valve

Motion
Sensor



Hydrogenerator

INTELLIGENT WATER VALVE

The Toilet Scrooge™



Technical Data

Part Numbers	GDV-2
Operating Temperature	32° - 104°F (0° - 40°C)
Minimum Operating Water Pressure	3 PSI (0.02 MPa)
Thread	1/4 NPT (both sides)
Motion Sensing	Digital Passive IR
Detection Distance	2m (6.56 ft)
Certifications	FCC ID: 2ANUH-LSTM300U IC ID: 23260-LSTM300U CE

Dimensional Drawings

